

SAGE PRO



sage  
software  
*Your business in mind.*

Sage Pro ERP is an award-winning accounting and manufacturing solution with full source code availability for ultimate flexibility and growth.



## Freedom to Choose

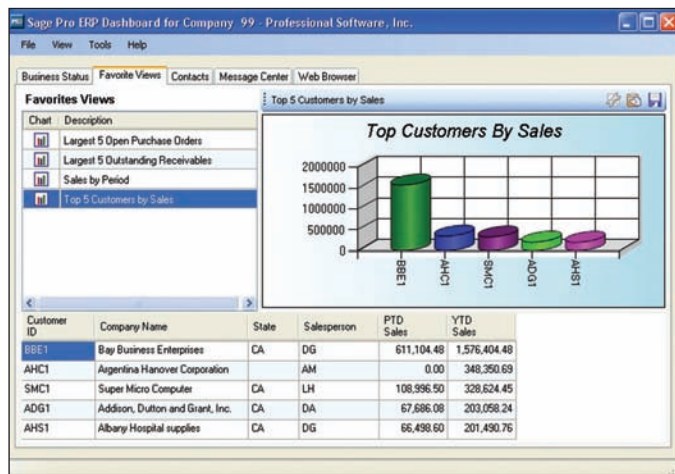
With Sage Pro ERP you can create a system fully tailored to the work you do. Choose the business management applications you want from a comprehensive, integrated suite of accounting and manufacturing modules. In addition, Sage Pro offers seamless out-of-the-box integration to end-to-end business management applications, including customer relationship management (CRM), human resources management, warehouse management, electronic data interchange (EDI), e-commerce, business analytics, and vertical solutions.

## Ready to Use, Easy to Adapt

Sage Pro is an award-winning accounting and manufacturing solution designed to meet the changing needs of your company, delivering the combined benefits of advanced productivity tools, modifiable source code, and state-of-the-art accounting and manufacturing capabilities.

Available in two editions, both with powerful built-in features that help you maximize efficiency and profitability, Sage Pro grows along with your business and technical requirements. Sage Pro 200 ERP comes with full source code availability and can be uniquely modified to optimize your business processes. Sage Pro 100 ERP is ideal for the smaller company that may need the option of upgrading to Sage Pro 200 over time.

Each edition provides advanced customization tools and easy access to critical, real-time business information so you can automate your workflow, drill down to any level of data you need, generate advanced reports, and more.



The Favorite Views tab in the Executive Dashboard allows you to see trends and track progress for a variety of important business factors.

## Unlimited Customization

With Sage Pro Customization Manager, it's easy to create unique screens to fit your business needs and each user's individual preferences. Customization Manager and a host of other user-defined options in Sage Pro allow you to tailor the look and feel of your system. And when you need full access to source code to modify your system to meet your exclusive business needs, look to Sage Pro 200.

## State-of-the-Art Manufacturing

Sage Pro for Manufacturers features a full suite of integrated manufacturing and accounting modules to suit your needs. Choose the manufacturing modules that you require from Production Entry, Work Orders, or Shop Control. Then, integrate with the accounting and operational modules such as Inventory Control, Order Entry, Purchase Orders, Customer Connect, and Bills of Lading to smoothly manage your specific manufacturing and distribution processes.

## Maximum Productivity

Sage Pro provides real flexibility with toolbars that are customizable by user and available throughout the system. Now your employees can have instant access to the transaction and maintenance screens they use most—for increased efficiency and productivity.

## Real-Time Business Information

Keep real-time, critical business information at your fingertips. Using the new Executive Dashboard, you can focus on the high-value activities that can really make a difference in your business. You and your executives can check the pulse of your company in seconds. And with instant access to business intelligence, easily identify issues and work to prevent problems before they happen.

Stay up to the minute with the Business Status Report (BSR), which includes cash balances, forecasts, and inventory values. Funnel data from your Accounts Payable, Accounts Receivable, Order Entry, and Purchase Orders modules into one handy, at-a-glance view. From there, you can print, or drill down into details with ease.

## Automated Work Flow and Document Routing

You can now leverage new workflow and routing capabilities in the Order Entry and Purchase Orders modules to eliminate the drudgery and monotony of tedious manual approvals and constant paper searches.

The built-in routing offers unprecedented flexibility. Define how much control you want for each process and easily change settings with set-up flexibility. Determine approval levels and limits, map your processes and routes, and configure routing to match the way you operate your business.

Additionally, the Sage Pro ProAlert module is specifically designed to notify you of key information. It acts as a “business robot,” automatically searching for critical events that are defined by you, then taking appropriate action in response.

You'll find that managing your documents and workflow has never been faster or more efficient.

## Powerful Drill-Down Capabilities

The Sage Pro DataDriller delivers sophisticated multilevel drill-down functionality. For custom reporting or individualized access to document detail, you can display data in any order and customize it for any user. You assign the permissions and security codes, so you're in control. Plus, once these data views are defined, you can create unlimited custom reports using the DataDriller Report Wizard.

Vendor	Invoice Num	Purdate	Puramt	Balance	Due date	Terms	Ref
POE	02212000	03/02/04	752.50	752.5000	03/31/04	Net 30 Days	
GBR1	6531	03/15/04	4,500.00	4,500.0000	03/15/04	Due Upon Receipt	
CMA1	6532	02/18/04	13,334.00	13,334.0000	03/23/04	Net 30 Days	
OSB1	8720	03/19/04	1,889.95	1,889.9500	03/24/04	2% 7 Days, Net 14	
ABC1	9535	03/19/04	3,358.86	3,358.8600	03/25/04	Net 30 Days	
ACCT	6320	03/02/04	390.00	390.0000	04/01/04	Net 30 Days	
ACPI	8231	03/03/04	4,348.10	4,348.1000	04/02/04	Net 30 Days	
MCP1	4292	02/22/04	8,457.00	8,457.0000	04/07/04	1% 10 Days, Net 45	
ACCT	1220	03/09/04	1,815.00	1,815.0000	04/07/04	Net 30 Days	
SBTU	3242	03/19/04	43,650.00	43,650.0000	04/09/04	Net 30 Days	
SBT1	6537	03/19/04	327,500.00	327,500.0000	04/09/04	Net 30 Days	
MCP1	8745	03/23/04	4,440.00	4,440.0000	05/07/04	1% 10 Days, Net 45	

The Sage Pro DataDriller puts your accounting data at your fingertips.

## Advanced Messaging

The Sage Pro Message Master module lets you generate faxes or e-mail from any Sage Pro report, including graphical forms. You can

send forms or reports concurrently to a virtually unlimited number of recipients at any time of day. Customize settings by user and keep a log of all documents transmitted. Imagine sending all your invoices in seconds!

## Project Accounting

Project Accounting provides a fast, flexible budgeting and cost accounting tool for project and job cost management. It lets you test, analyze, and adjust budgets before final decisions are made. The program provides detailed reports of all job-related costs so you can monitor a job's progress and budget for future projects.

## Total Protection

Sage Pro provides sophisticated user- and company-based security. A comprehensive list of user settings let you specify how and when users access the system. Furthermore, access to specific fields can be controlled and modified for each user. Sage Pro also delivers time-tested accounting functionality that ensures high-level audit control. With Sage Pro, you can configure system and workstation settings, define user security levels, and control user access by function, time of day, and date range. Additionally, you have the option to encrypt user passwords and names for added security. These are just a few of the security features you'll find in the award-winning Sage Pro application.

## National Accounts Functionality

Sage Pro makes it simple to manage receivables for customers with multiple branches or independent departments. You get all the features and functionality you need for national accounts management, including easy branch set up, advanced filtering, complete drilldown reporting, and much more.

## Intercompany Transactions

With capabilities like automatic balancing, easy invoicing, multi-company distributions, complete audit trails, detailed reconciliation reporting, and multicurrency support, Sage Pro is well-equipped to handle your most sophisticated intercompany transactions.

## SAGE PRO MODULES

- System Manager
- General Ledger
- Accounts Receivable
- Accounts Payable
- Inventory Control
- Order Entry
- Purchase Orders
- Payroll
- EFT Direct Payroll
- Multicurrency
- Job Cost
- Project Accounting
- Customization Manager
- Production Entry
- Work Orders
- Shop Control
- Intercompany Transactions<sup>1</sup>
- Message Master
- ProAlert
- Customer Connect
- Return Merchandise Authorization
- Request for Quote<sup>1</sup>
- EFT for Accounts Payable
- Bills of Lading
- Bills of Materials
- Serial Control<sup>2</sup>
- Lot Control<sup>2</sup>

## PLATFORMS/CERTIFICATIONS<sup>3</sup>

- Network Server: Microsoft Windows 2003, Microsoft Windows 2000, Microsoft Windows NT, Microsoft Windows Small Business Server, and Linux
- Workstation: Microsoft Windows XP Professional, Microsoft Windows 2000, and Microsoft Windows NT
- Database: Microsoft Visual FoxPro, Microsoft SQL Server
- Customization Language: Microsoft Visual FoxPro

<sup>1</sup> Compatible with Sage Pro 200 only.

<sup>2</sup> Included in Sage Pro 200 Inventory Control and optional with Sage Pro 100.

<sup>3</sup> For up-to-date information about supported platform versions and certifications, please visit [www.accpac.com/products/system\\_requirements.asp](http://www.accpac.com/products/system_requirements.asp)

Sage Pro for Manufacturers gives you a competitive edge with a comprehensive, integrated suite of production and accounting modules.

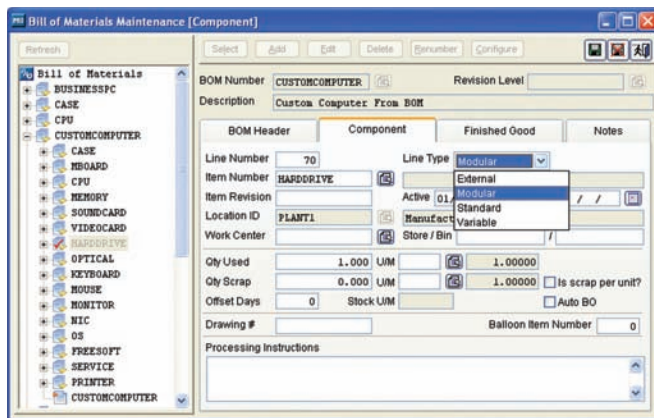


## Robust Capabilities

Sage Pro for Manufacturers ensures operations such as kitting, component allocation, production orders, routing, plan orders, tracking, and fixed capacity scheduling are managed with power and speed.

## Flexible Bills of Materials

Bills of Materials can be defined using a number of options. Each bill has its own settings, enabling you to get complete control of your manufacturing or distribution operations.



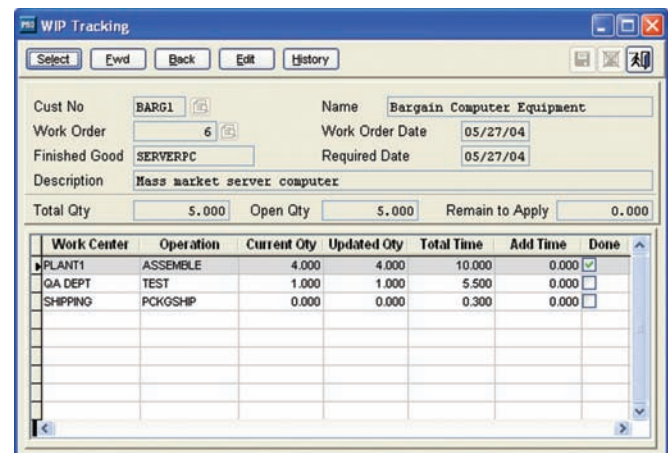
Support for modular and variable components dramatically decreases the number of bills of materials you maintain.

## Work Orders

Work Orders enables component allocation, routing, and Material Requirement Planning (MRP). Automatically generate production orders from sales order requirements, inventory shortages, or inventory forecasts. Define work centers and operation steps to create flexible labor routes and generate purchase orders from MRP shortages and bills of materials components marked for external processing.

## WIP Tracking and Shop Control

Shop Control's Work in Progress (WIP) tracking provides production updates by pulling routing information from open work orders and presenting finished quantities as they progress through operations and work centers. WIP tracking saves each step and allows production managers to review performance at any time.



Take control of how production is progressing on work orders by using the WIP tracking screen.

## Easy-to-Use MRP and MRPII

Manufacturers needing MRP or Manufacturing Resource Planning (MRPII) enjoy continued ease of use in the Sage Pro for Manufacturers environment. You'll get fast access to component allocation, production orders, routing, plan orders, WIP tracking, and fixed capacity scheduling whenever the information is required.

Each edition of Sage Pro is based on the same award-winning technology. Choose the edition that suits the unique requirements of your business.



## Sage Pro 100 ERP

Sage Pro 100 ERP, built on the same award-winning architecture as Sage Pro 200, is specifically designed for the small but growing company that requires a complete suite of accounting and operations modules. As an entry-level solution, Sage Pro 100 delivers real power and scalability at an affordable price.

Sage Pro 100 offers the robust features small businesses need now, with the ability to easily upgrade to full source code if their requirements change. It is also fully integrated for maximum efficiency, simplicity, and reliability.

### Customer Profile

Sage Pro 100 is ideal for smaller companies that demand a stable, full-featured accounting system to track and accelerate growth. Supporting as many as 10 concurrent users, this edition allows a simple migration path when these customers are ready to step up to a more sophisticated financial and operations management solution.

### Modules

System Manager, General Ledger, Accounts Receivable, Accounts Payable, Inventory Control, Order Entry, Purchase Orders, Payroll, EFT Direct Payroll, Multicurrency, Job Cost, Project Accounting, Customization Manager, Production Entry, Work Orders, Shop Control, Message Master, ProAlert, Customer Connect, Return Merchandise Authorization (RMA), EFT for Accounts Payable, Bills of Lading, and Bills of Materials. Serial Control and Lot Control are optional modules.

## Sage Pro 200 ERP

Sage Pro 200 ERP is a powerful business management solution built on industry-leading technology. Scalable, customizable, and modifiable, Sage Pro 200 helps your business operate more efficiently and profitably.

You can easily change source code, forms, and reports and create unique screens for users. Designed to support unlimited users, Sage Pro 200 features award-winning architecture, complete source code availability, user-customizable toolbars, add-on solutions, control over security, and a full suite of financial management and operational modules from which to choose.

### Customer Profile

Sage Pro 200 is designed for a midsized business demanding a scalable, feature-rich system with powerful analysis and reporting capabilities. These clients typically need strong customization options (including full source code availability) and unlimited user support to maintain maximum control over their growth paths.

### Modules

System Manager, General Ledger, Accounts Receivable, Accounts Payable, Inventory Control (including Serial Control and Lot Control), Order Entry, Purchase Orders, Payroll, EFT Direct Payroll, Multicurrency, Job Cost, Project Accounting, Customization Manager, Production Entry, Work Orders, Shop Control, Intercompany Transactions, Message Master, ProAlert, Customer Connect, Return Merchandise Authorization (RMA), EFT for Accounts Payable, Request for Quote, Bills of Lading, and Bills of Materials.

*"This solution really does have it all. By implementing this complete business management solution, we have been able to maintain our momentum in the most challenging of times."*

Gerhard Widtmann, vice president  
Grand Prix Tours

Sage Pro is the foundation for an integrated set of end-to-end business management applications designed to grow with your business.



## Run Your Business Your Way

A wide choice of end-to-end business management applications integrate with Sage Pro right “out-of-the-box.” These cost-effective, reliable solutions can be implemented all at once or one at a time to fit all your particular business needs—from Web store to warehouse and pre-sales prospecting to post-sales customer care.

In addition, your Sage Pro system can be enhanced and extended to meet your market-specific requirements, thanks to the availability of a wide range of high-quality integrated vertical tools designed by third-party developers from around the world.

### Sage Accpac CRM

Sage Accpac CRM is a comprehensive, award-winning CRM system that provides enterprise-wide access to vital customer, partner, and prospect information—anytime, anywhere. Sage Accpac CRM helps you better manage your business by integrating field sales, internal sales, customer care, and marketing information and is available in-house or as a hosted application at [www.sagecrm.com](http://www.sagecrm.com).

### Sage Accpac HRMS

Sage Accpac HRMS increases efficiency in every aspect of HR administration—HR, benefits enrollment, employee self-service, attendance, recruiting, and training. It allows you to purchase each component individually, so you won't pay for more than your company needs.

### Sage Accpac WMS

Sage Accpac WMS is designed to automate your inventory-handling processes and help you better manage your supply chain. It works as part of a complete operational system by interfacing with radio-frequency hardware, barcoding technology, shipping systems, and other warehouse automation equipment, providing a significantly improved allocation of resources within the warehouse.

*“With Sage Pro we can make decisions more quickly and effectively than ever before.”*

Calvin Clarke, vice president of finance  
Superior Concrete

*“The Sage Pro integrated system eliminated chances for human error when transferring entries from one system to the next.”*

Brenda Zeiber, vice president  
New Era Contract Sales

### Sage Accpac Exchange

Sage Accpac Exchange is a comprehensive electronic data interchange (EDI) solution that complies with traditional EDI technologies and integrates back-office automated transaction processing, Internet trading and the global EDI network. It makes exchanging data with trading partners easy, no matter what EDI system or value added network (VAN) they are using.

### ACCPAC eTransact

ACCPAC eTransact is a quick and affordable way to create a professional Web store that fully integrates with your back-office Sage Pro accounting system. The powerful software provides automated features and advanced capabilities that makes it easy for customers to serve themselves by shopping and placing orders on the Web.

### Sage Accpac Insight

Sage Accpac Insight is an enterprise-wide reporting, budgeting, and consolidations application that is ideal for employees in remote offices and disparate departments who need to manage, distribute, and collaborate from a single, unified source. It allows you to quickly capture and integrate information into meaningful reports and securely distribute them across your entire enterprise on demand.

### ACCPAC CFO

ACCPAC CFO is a financial diagnostic tool that helps you better understand the implications of specific business decisions, identify the most effective use of financial resources, and measure the profitability of virtually every business goal.

## About Sage Software

Sage Software supports the needs, challenges, and dreams of more than 2.6 million small and mid-sized customers in North America through easy-to-use, scalable, and customizable software and services. Our products support accounting, operations, customer relationship management, human resources, time tracking, merchant services, and the specialized needs of the construction, distribution, healthcare, manufacturing, nonprofit, and real estate industries. Sage Software is a subsidiary of The Sage Group plc, a leading international supplier of accounting and business management software solutions and related product and services for small to mid-sized businesses. Formed in 1981, Sage was floated on the London Stock Exchange in 1989 and the Group now has 5.0 million customers and employs over 10,500 people worldwide. For more information, please visit the Web site at [www.sagesoftware.com/moreinfo](http://www.sagesoftware.com/moreinfo) or call 866-308-2378.

## Sage Software Offers Fully Integrated Business Management Applications

- Accounting and Operations
- Customer Relationship Management (CRM)
- Human Resource Management
- Warehouse Management
- Electronic Data Interchange (EDI)
- E-Commerce
- Point of Sale
- Project and Job Costing
- Business Analytics
- Enterprise Reporting
- Hundreds of Industry-Specific Solutions



## Sage Software Offers Unmatched Freedom of Choice

- True integration across applications
- Advanced Web and wireless access
- Flexible deployment and purchasing options
- Scalable, open architecture
- Advanced customization
- Microsoft Windows or Linux operating system support
- Microsoft SQL Server and Microsoft Visual FoxPro database support
- Full multilingual and multicurrency capabilities
- And much more!

Visit us at [www.sagesoftware.com](http://www.sagesoftware.com) or call 800-873-7282 today for more information about our end-to-end business management applications.



Sage Accpac International, Inc.  
6700 Koll Center Parkway  
Third Floor  
Pleasanton, CA 94566

925-461-2625  
800-873-7282  
[www.sagesoftware.com](http://www.sagesoftware.com)